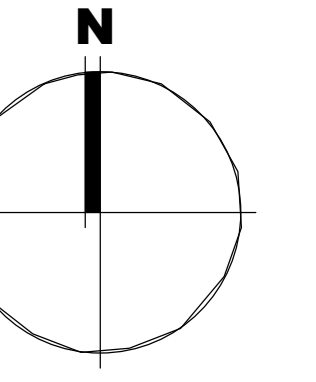


See drawing 6158B-P-013 for remaining site area

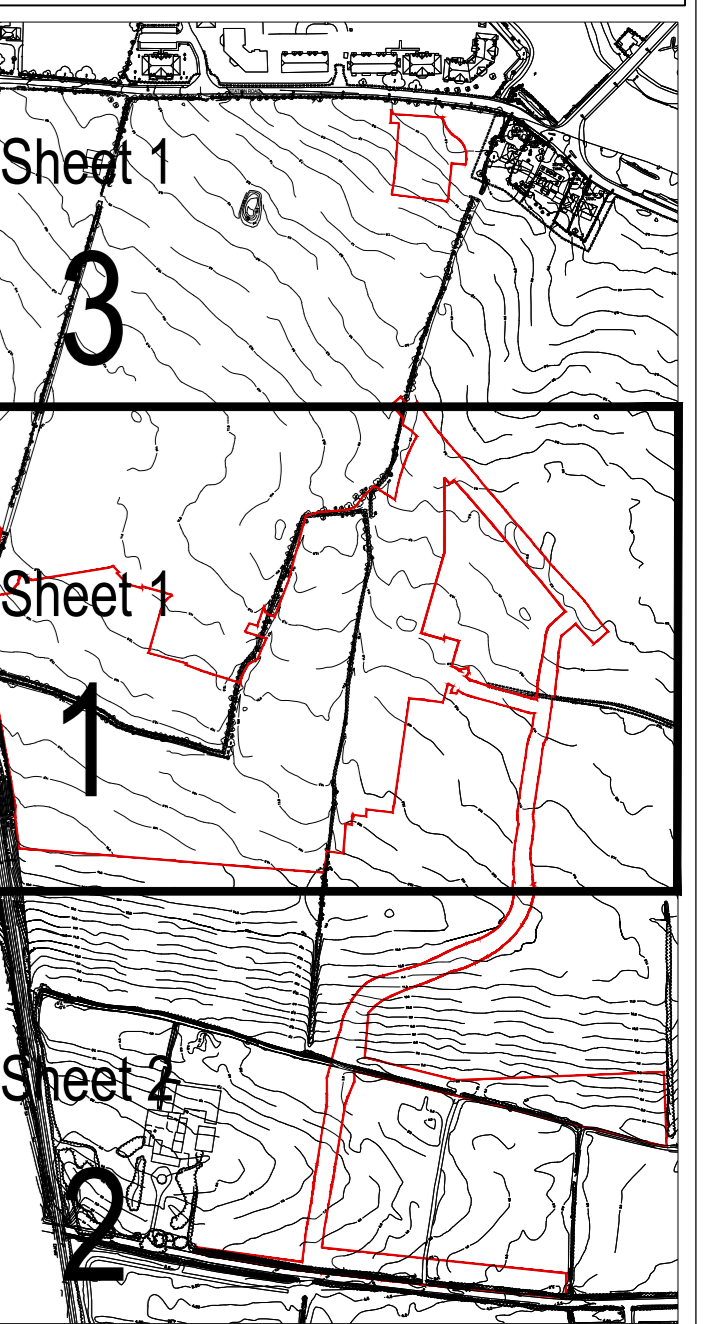
See drawing 6158B-P-013 for remaining site area

THIS DRAWING RELATES TO OS-DRAINAGE SURVEY
MAPS O.S. MAP REF. 3065-B, 3065-D, 3066-C,
3065-15 & 3066-11.
OS DATUM TO MALIN HEAD



SKYLARK

Subject Site Keyplan (NTS)



APPLICATION SITE BOUNDARY

REFER TO LANDSCAPE ARCHITECT'S DRAWINGS FOR ALL LANDSCAPING DETAILS

SITE LAYOUT PLAN

TAKING IN CHARGE LAYOUT PLAN

See drawing 6158B-P-012 for remaining site area

See drawing 6158B-P-012 for remaining site area

- 1. Copyright Reserved
- 2. Works to be completed in accordance with the approved drawings only. Do not scale drawings.
- 3. The contractor is responsible for checking all levels and dimensions on site and shall advise of discrepancies to the Architect.
- 4. Where appropriate, for details of civil, structural, or mechanical and electrical details, see Engineers drawings.
- 5. Proprietary items shall be fixed in strict accordance with manufacturers instructions.
- 6. Scope of proprietary items shall be checked with manufacturer.
- 7. The contractor shall be responsible for the coordination of structure, finishes and services.

Issue Status	Progress
Planning Application	■
Final Cert	■
Disability Cert	■
Fire Cert	■
Construction	■
As Built	■
Information Only	■

No.	Date	Revision	By	Check
01	07/05/21	ABP - Pre-Planning Submission	JK	JN
02	26.11.21	SHD PLANNING APPLICATION TO ABP		

Project: Portmarnock South - Phase 1D
 Quintain Developments Ireland Limited
 Drawing Title: TAKING IN CHARGE DRAWING SHEET 1 of 3
 Drawing No: 6158B-P-011
 Scale: 1:500@A0 Rev: 02 Drawn: VJF Date: 27.04.2021

